

TEXAS OSTEOPATHIC PHYSICIANS  
**JOURNAL**

April 1979





PEDIATRIC INDICATIONS\*  
FOR BACTRIM CONTINUE  
TO GROW...

URINARY TRACT  
INFECTIONS

PNEUMOCYSTIS  
CARINII  
PNEUMONITIS

SHIGELLOSIS

ACUTE OTITIS  
MEDIA

*\*Involving susceptible organisms.*

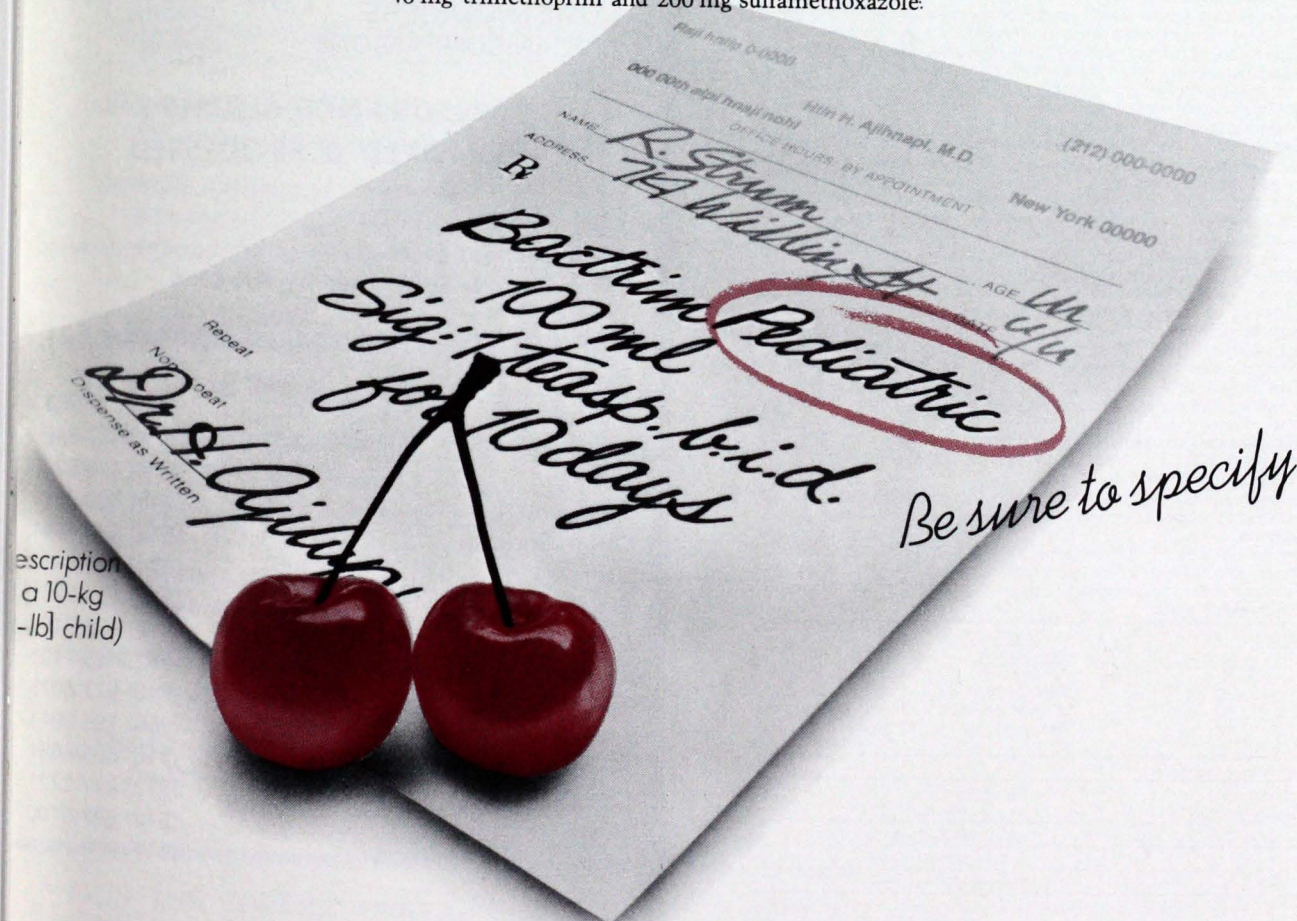
Please see Indications section in summary of product information on last page of this advertisement.



# NOW... ROCHE INTRODUCES

## NEW CHERRY FLAVOR **BACTRIM<sup>TM</sup>** **PEDIATRIC** **SUSPENSION**

Each teaspoonful (5 ml) contains  
40 mg trimethoprim and 200 mg sulfamethoxazole.



Prescription slip for Bactrim Pediatric Suspension, Cherry Flavor. The slip is from Dr. H. J. Williams, M.D., New York 00000. The patient is R. Stamm, 14 William St., New York 00000. The prescription is for 100 ml of Bactrim Pediatric Suspension, 100 mg/5 ml, to be taken 1 teaspoonful b.i.d. for 10 days. The doctor's signature is Dr. H. J. Williams. Two red cherries are placed on the slip, with one cherry's stem pointing to the word 'Bactrim' in the prescription.

Be sure to specify

ESPECIALLY FLAVORED  
FOR CHILDREN\*

Also available: The original fruit-licorice flavor to be prescribed  
"Bactrim Suspension." The same active ingredient formulation—the difference is the flavor.

\*Contraindicated in children under 2 months of age.

Please see summary of product information on following page.



# BACTRIM<sup>TM</sup>

(trimethoprim and sulfamethoxazole)

ROCHE

Before prescribing, please consult complete product information, a summary of which follows:

**Indications and Usage:** For the treatment of urinary tract infections due to susceptible strains of the following organisms: *Escherichia coli*, *Klebsiella-Enterobacter*, *Proteus mirabilis*, *Proteus vulgaris*, *Proteus morganii*. It is recommended that initial episodes of uncomplicated urinary tract infections be treated with a single effective antibacterial agent rather than the combination. *Note:* The increasing frequency of resistant organisms limits the usefulness of all antibacterials, especially in these urinary tract infections. For acute otitis media in children due to susceptible strains of *Haemophilus influenzae* or *Streptococcus pneumoniae* when in physician's judgment it offers an advantage over other antimicrobials. Limited clinical information presently available on effectiveness of treatment of otitis media with Bactrim when infection is due to ampicillin-resistant *Haemophilus influenzae*. To date, there are limited data on the safety of repeated use of Bactrim in children under two years of age. Bactrim is not indicated for prophylactic or prolonged administration in otitis media at any age. For enteritis due to susceptible strains of *Shigella flexneri* and *Shigella sonnei* when antibacterial therapy is indicated.

Also for the treatment of documented *Pneumocystis carinii* pneumonitis. To date, this drug has been tested only in patients 9 months to 16 years of age who were immunosuppressed by cancer therapy.

**Contraindications:** Hypersensitivity to trimethoprim or sulfonamides; pregnancy; nursing mothers; infants less than two months of age.

**Warnings:** BACTRIM SHOULD NOT BE USED TO TREAT STREPTOCOCCAL PHARYNGITIS. Clinical studies show that patients with group A  $\beta$ -hemolytic streptococcal tonsillopharyngitis have higher incidence of bacteriologic failure when treated with Bactrim than do those treated with penicillin. Deaths from hypersensitivity reactions, agranulocytosis, aplastic anemia and other blood dyscrasias have been associated with sulfonamides. Experience with trimethoprim is much more limited but occasional interference with hematopoiesis has been reported as well as an increased incidence of thrombopenia with purpura in elderly patients on certain diuretics, primarily thiazides. Sore throat, fever, pallor, purpura or jaundice may be early signs of serious blood disorders. Frequent CBC's are recommended; therapy should be discontinued if a significantly reduced count of any formed blood element is noted.

**Precautions:** Use cautiously in patients with impaired renal or hepatic function, possible folate deficiency, severe allergy or bronchial asthma. In patients with glucose-6-phosphate dehydrogenase deficiency, hemolysis, frequently dose-related, may occur. During therapy, maintain adequate fluid intake and perform frequent urinalyses, with careful microscopic examination, and renal function tests, particularly where there is impaired renal function. Bactrim may prolong prothrombin time in those receiving warfarin; reassess coagulation time when administering Bactrim to these patients.

**Adverse Reactions:** All major reactions to sulfonamides and trimethoprim are included, even if not reported with Bactrim. *Blood dyscrasias:* Agranulocytosis, aplastic anemia, megaloblastic anemia, thrombopenia, leukopenia, hemolytic anemia, purpura, hypoprothrombinemia and methemoglobinemia. *Allergic reactions:* Erythema multiforme, Stevens-Johnson syndrome, generalized skin eruptions, epidermal necrolysis, urticaria, serum sickness, pruritus, exfoliative dermatitis, anaphylactoid reactions, periorbital edema, conjunctival and scleral injection, photosensitization, arthralgia and allergic myocarditis. *Gastrointestinal reactions:* Glossitis, stomatitis, nausea, emesis, abdominal pains, hepatitis, diarrhea and pancreatitis. *CNS reactions:* Headache, peripheral neuritis, mental depression, convulsions, ataxia, hallucinations, tinnitus, vertigo, insomnia, apathy, fatigue, muscle weakness and nervousness. *Miscellaneous reactions:* Drug fever, chills, toxic nephrosis with oliguria and anuria, periarthritis nodosa and L.E. phenomenon. Due to certain chemical similarities to some goitrogens, diuretics (acetazolamide, thiazides) and oral hypoglycemic agents, sulfonamides have caused rare instances of goiter production, diuresis and hypoglycemia in patients; cross-sensitivity with these agents may exist. In rats, long-term therapy with sulfonamides has produced thyroid malignancies.

**Dosage:** Not recommended for infants less than two months of age.

URINARY TRACT INFECTIONS AND SHIGELLOSIS IN ADULTS AND CHILDREN, AND ACUTE OTITIS MEDIA IN CHILDREN.

**Adults:** Usual adult dosage for urinary tract infections—1 DS tablet (double strength), 2 tablets (single strength) or 4 teasp. (20 ml) b.i.d. for 10-14 days. Use identical daily dosage for 5 days for shigellosis.

**Children:** Recommended dosage for children with urinary tract infections or acute otitis media—8 mg/kg trimethoprim and 40 mg/kg sulfamethoxazole per 24 hours, in two divided doses for 10 days. Use identical daily dosage for 5 days for shigellosis. A guide follows: Children two months of age or older:

Weight		Dose—every 12 hours	
lbs	kgs	Teaspoonfuls	Tablets
22	10	1 teasp. (5 ml)	½ tablet
44	20	2 teasp. (10 ml)	1 tablet
66	30	3 teasp. (15 ml)	1½ tablets
88	40	4 teasp. (20 ml)	2 tablets or 1 DS tablet

For patients with renal impairment:

Creatinine Clearance (ml/min)	Recommended Dosage Regimen
Above 30	Usual standard regimen
15-30	½ the usual regimen
Below 15	Use not recommended

**PNEUMOCYSTIS CARINII PNEUMONITIS:** Recommended dosage: 20 mg/kg trimethoprim and 100 mg/kg sulfamethoxazole per 24 hours in equal doses every 6 hours for 14 days. See complete product information for suggested children's dosage table.

**Supplied:** Double Strength (DS) tablets, each containing 160 mg trimethoprim and 800 mg sulfamethoxazole, bottles of 100. Tel-E-Dose\* packages of 100, Prescription Packs of 20 tablets, each containing 80 mg trimethoprim and 400 mg sulfamethoxazole—bottles of 100 and 500; Tel-E-Dose\* packages of 100, Prescription Packs of 40, available singly and in trays of 10. Pediatric Suspension, containing in each teaspoonful (5 ml) the equivalent of 40 mg trimethoprim and 200 mg sulfamethoxazole, cherry flavored—bottles of 16 oz (1 pint). Suspension, containing in each teaspoonful (5 ml) the equivalent of 40 mg trimethoprim and 200 mg sulfamethoxazole, fruit-licorice flavored—bottles of 16 oz (1 pint).

ROCHE

Roche Laboratories  
Division of Hoffmann-La Roche Inc.  
Nutley, New Jersey 07110

# HOME CARE NURSING

for emergency or planned needs

—AT REASONABLE RATES—

On Call 24 Hrs a Day  
7 Days a Week

NURSES RN's—LVN's  
HOME HEALTH AIDES  
NURSE AIDES  
HOME MANAGERS  
LIVE-IN COMPANIONS

Chronically ill  
Convalescent  
Maternity  
Invalids  
Elderly

FOR

INSURANCE CLAIMS  
HONORED & PROCESSED

All employees carefully selected, bonded, insured  
& Supervised by RN-PHN

OFFICES TO ASSIST YOU IN PATIENT CARE

Amarillo . . . . .	(806) 374-2527
Arlington . . . . .	(817) 277-6456
Austin . . . . .	(512) 476-9245
Beaumont . . . . .	(713) 898-2565
Corpus Christi . . . . .	(512) 855-4861
Dallas . . . . .	(214) 521-3461
El Paso . . . . .	(915) 779-3281
Fort Worth . . . . .	(817) 926-7191
Harlingen . . . . .	(512) 428-7101
Houston . . . . .	(713) 977-8015
Lubbock . . . . .	(806) 795-8911
Midland . . . . .	(915) 684-6681
Pasadena . . . . .	(713) 477-2721
San Antonio . . . . .	(512) 696-0100
Waco . . . . .	(817) 776-7026



QUALITY CARE<sup>®</sup>  
"The Complete Nursing Service"

An Equal Opportunity Employer Male/Female  
1978 QUALITY CARE, INC.





# TEXAS OSTEOPATHIC PHYSICIANS JOURNAL

## FEATURES

	Page
<b>A Close Encounter of the Medical Kind</b> <i>Highlights of the 80th Annual TOMA Convention and Scientific Seminar</i>	7
<b>HYATT REGENCY: Designed for the 21st Century</b> <i>A pictorial layout of the convention hotel</i>	12
<b>Convention Program</b> <i>Day-to-day listing of convention activities</i>	14
<b>TOMA Supporters Reach Record High</b> <i>Over 90 exhibitors and three grantors plan participation at May meeting</i>	16
<b>New Services Sought At Osteopathic Hospital</b> <i>Southwest Osteopathic Hospital files for certificate of need</i>	20
<b>Proposed Changes to TOMA Bylaws</b> <i>Three changes to be voted on by House of Delegates</i>	23
<b>Friends, Colleagues 'Roast' Dr. Fisher</b> <i>Birthday celebration benefits FWOH building fund</i>	26

## DEPARTMENTS

<b>Calendar of Events</b>	6
<b>District Communiqués</b> <i>News from the Districts</i>	18
<b>Texas Ticker Tape</b>	19
<b>Academia</b> <i>News from the Colleges</i>	22
<b>ATOMA News</b> <i>News From the Auxiliary</i>	28
<b>Opportunities Unlimited</b> <i>Practice Locations in Texas</i>	31

ON THE COVER: *Headquarters for the 80th Annual TOMA Convention and Scientific Seminar, May 10-12 in Dallas will be the Hyatt Regency at Reunion. Make plans now to attend the state meeting.*

Cover Photo by Duncan Engler Photography.

Published by  
TEXAS OSTEOPATHIC MEDICAL ASSOCIATION  
Volume XXXVI — No. 4 — April 1979  
Publication Office — 512 Bailey, Fort Worth, Texas 76107  
Phone — 817-336-0549  
Copy Deadline — 10th of month preceding publication

Mr. Tex Roberts, Editor



# Calendar of Events

## April

4

- ★ *TOMA District XI Meeting*  
*Presidential Visit by Gerald Flanagan, D.O.*  
El Paso Club  
El Paso National Bank Building  
El Paso  
6:30 p.m.

5

- 5-8  
*Annual Convention of the Lamda Omicron Gamma National Fraternity*  
Spring Glen, New York

7

- Seminar on Nutrition*  
Medical Education Building I  
Auditorium  
TCOM

19

- ★ *TOMA District XIV Meeting*  
Matador Room  
Holiday Inn  
Harlingen  
7:30 p.m.

20

- Third Annual A.T. Still Memorial Seminar and Run*  
Medical Education Building I  
TCOM

25

- ★ *TOMA District XVI Meeting*  
Tradewinds Motor Hotel  
Wichita Falls  
6:30 p.m.

MAY

10

10-12

- ★ *TOMA Annual Convention*  
Hyatt Regency at Reunion  
Dallas

18

- TCOM Senior Banquet*

19

- TCOM Commencement*

23

- ★ *TOMA District XVI Meeting*  
Tradewinds Motor Hotel  
Wichita Falls  
6:30 p.m.

june

21

- ★ *TOMA District XIV Meeting*  
Matador Room  
Holiday Inn  
Harlingen  
7:30 p.m.

27

- ★ *TOMA District XVI Meeting*  
Tradewinds Motor Hotel  
Wichita Falls  
6:30 p.m.



# A Close Encounter of the Medical Kind

## President's Night

For a relaxing evening filled with humor, satire and a variety of acts, make plans to attend the After Dinner Show following the President's Reception and Dinner.

This year's entertainment will not be the traditional dance, but instead will be a musical, comedy revue.

Starting the evening off will be a special mystery guest who will entertain you like you've never been entertained before. He will be signing in and making his appearance as soon as the conventioners are settled in following the dinner. Don't waste any time making your way from the dinner to the show arena.

Among the variety acts you will be watching will be Warren Bradley, Rich Little type impressionist; Robert Cox, a fast-gun artist; Chris and the Dude, a country-western signing-comedy duo; and Adam Holtz, a single act guitarist-vocalist.

A youngster in the field of entertainment, Bradley is in his mid-twenties and has a range of impressions from Ed Sullivan to Carol Channing to John Travolta and Don Meredith. His entire repertoire includes over 40 impressions.

Robert Cox, The Texan, has a lightning draw so fast it takes an electronic clock to record it. Among his amazing feats are

- draws his gun and stops the clock between .12 and .17 seconds
- balances a styrofoam cup on his right (drawing) hand, goes for his gun and blasts the cup apart before it falls 6-8 inches
- faces a member of the audience who has a loaded, cocked gun in his hand and then outdraws him.

Also, an actor, Cox has made numerous television commercials and is also known for his role in the television series "High Chaparral."

A single act guitarist-vocalist, Adam Holtz has a unique versatility, ability and equipment that will make you wonder where the rest of the band is.

Don't miss this evening of delightful entertainment!

## POPPS Reception

The Patriarchal Order of Past Presidents (POPPS) will meet at 6 p.m., Thursday, May 10 for its annual non-business meeting/reception. All past presidents are urged to attend.

Past presidents are urged to remember that "It shall be the duty of all members to resist with all vigor any attempt by the president of TOMA to entice them into assuming any duties." So, don't get caught up in the excitement of the convention and agree to any special duties!

## Time Tunnel Fun Night

As the TOMA Starship concludes its journey into outer space and *A Close Encounter of the Medical Kind* comes to an end, we will enter the Time Tunnel at 6:30 p.m., Saturday for an evening of nostalgic memories.

Set up for the Fun Night activities will be a Disco complete with flashing lights and a professional DJ to spin the discs from the 40's, 50's,

60's and 70's as we travel through the Time Tunnel. In addition to taking us on our journey through time, our DJ, David Fusco, will be ready and waiting to take requests from the audience. Try to remember your favorite song from your favorite era and hopefully he will be able to produce it for you.

Prior to the opening of the Disco Dance Floor, you will be treated to a 30-minute comedy skit.



# Registration

SAVE\$ SAVE\$ SAVE\$

Save \$100 per couple by pre-registering the 1979 TOMA Convention.

Don't let the inflation bug get hold of your pocket book at the registration desk of the annual convention. Fight it off by pre-registering today. Pre-registration will be \$60 per person with registration at the door costing \$110 per person. This is a savings of \$50 per person. Tear out the blue registration card found in this issue of the *Journal* and mail it with your check today!



Each registration will include admission to the Champagne With Exhibitors, Keynote Luncheon, Alumni Breakfast, Auxiliary Brunch or AOA President-elect Luncheon, President's Reception, Dinner and After Dinner Show and the Time Tunnel Fun Night.

Early registration will be set up in the lobby of the Hyatt Regency and will be held from 1-5 p.m., Wednesday, May 9. If you check into the hotel by this time, please come by the registration desk and pick up your packet so you can avoid the rush Thursday morning.

Regular convention registration will be open from 8 a.m.-5 p.m. on Thursday and Friday and from 8 a.m.-noon on Saturday. It will be located in the Exhibit Hall.

# Sustainer Party

If you are a Sustainer, be ready for the annual Sustainer Party during the TOMA Convention. If you aren't already a Sustainer, don't waste your time—send in your \$100 today. If you become a Sustainer before the party begins, you will be able to attend.

## Golf, Tennis, Jogging

As you make plans for what to bring to the convention, don't forget to pack your tennis racquet, golf clubs and jogging shoes. Activities for each of these sports enthusiasts are being planned.

This year's golf and tennis tournaments will be held Friday, May 11 at the Oak Cliff Country Club, according to Dr. Robert Lorenz, chairman. The tennis tournament will begin at 9:30 a.m. and the first tee off for the golfers is set for 11 a.m. Golfers may use the practice range from 9 a.m. until the first tee time. Buses will leave the hotel at 9 a.m. to transport both tennis players and golfers to the country club.

For you golfers, the Oak Cliff Country Club was the home of the Dallas Open Golf Tournament for six years before the tournament was moved to Preston Trails and renamed the Byron Nelson Classic.

Joggers, get your running shoes on and come join Dr. Charles Ogilvie for daily runs. Dr. Ogilvie, in cooperation with the TCOM Institute of Human Fitness, is planning two runs on Thursday and Friday and one run on Saturday.

This year's party will once again be held at the Black Champ Ranch, owned by Drs. Haman and Finch. Buses will leave at 6:30 p.m., immediately following the Champagne With Exhibitors on Thursday, May 10, and take you south of Fort Worth to Mansfield for an evening of good friendship, food and dancing. Menu for the annual affair will be barbeque with all the trimmings.

If you wait until after the Sustainer Party to decide to join this elite group of TOMA supporters, you will still have an opportunity to win approximately \$700 of choice beef. This beef will be completely processed and shipped to your waiting freezer. Drawing for the beef will be held during the Time Tunnel Fun Night activities and you must be present to win.

If you want to join the Sustainers before the convention, contact the TOMA office. If you want to wait until the convention, look for the Sustaining Members with their white hats on. They will be more than happy to help you sign up. Don't miss this great opportunity to attend a fun-filled party and to win a steer, which is being donated by Drs. Haman and Finch.

The morning runs will begin at 6 a.m. and the evening runs will be at 5 p.m. A stretching session will precede each three-mile run. Word from Dr. Ogilvie is that each run will be "at an easy pace."

Don't forget to pack all those necessary extras if you plan to participate in these activities. Registration for the golf and tennis tournaments will be required. Registration blanks are located in this *Journal* with the convention registration forms.



# A Close Encounter of the Medical Kind

oselle,  
ent of  
eneral  
l be  
Texas  
e up-

will be  
ed for  
2, ac-  
Sharp,

ety of  
ett of  
o the  
eld R.  
is will  
akfast

vers of  
lans to  
ar Dr.

Hyatt  
open

## Exhibits

All convention participants are urged to make the rounds and visit with our exhibitors as much as possible during the convention. As of press time we have 97 exhibitors and three grantors that have pledged their support to the profession by participating in the convention.

Don't forget, the traditional Champagne With Exhibitors will be held at 5:30 p.m., Thursday, May 10. Visit as many exhibitors as possible during this event. Make our exhibitors feel welcome at the 80th Annual TOMA Convention. Support these exhibitors, they support you!





## 80th Annual Convention

Enclosed is \$\_\_\_\_\_ check for advance registration for \_\_\_\_\_ persons @ \$60.00 per person

To take advantage of this low advance registration fee, payment must accompany this form

**Registration deadline April 20**

Name \_\_\_\_\_ First Name for Badge \_\_\_\_\_

(please print)

My Spouse \_\_\_\_\_ will \_\_\_\_\_ will not \_\_\_\_\_ accompany me

(first name for badge)

City \_\_\_\_\_ State \_\_\_\_\_ AOA Membership No. \_\_\_\_\_

### TOMA Annual Golf Tournament Registration

Name \_\_\_\_\_

Address \_\_\_\_\_

Handicap \_\_\_\_\_

\$25 per person  
includes

½ cart, green fee, bus fare to Oak Cliff Country Club

CHECK ENCLOSED \_\_\_\_\_

(Please make check payable to TOMA)

### TOMA Tennis Tournament Registration

Name \_\_\_\_\_

Address \_\_\_\_\_

Handicap \_\_\_\_\_

\$7 per person  
includes

Court fee, bus fare to Oak Cliff Country Club

CHECK ENCLOSED \_\_\_\_\_

(Please make check payable to TOMA)

Each registration will include admission to the Champagne With Exhibitors, Keynote Luncheon, Alumni Breakfast, Auxiliary Brunch or AOA President-elect Luncheon, President's Reception, Dinner and After Dinner Show and the Time Tunnel Fun Night.

Early registration will be set up in the lobby of the Hyatt Regency and will be held from 1-5 p.m., Wednesday, May 9. If you check into the hotel by this time, please come by the registration desk and pick up your packet so you can avoid the rush Thursday morning.

Regular convention registration will be open from 8 a.m.-5 p.m. on Thursday and Friday and from 8 a.m.-noon on Saturday. It will be located in the Exhibit Hall.

Club, according to Dr. Robert Lorenz, chairman. The tennis tournament will begin at 9:30 a.m. and the first tee off for the golfers is set for 11 a.m. Golfers may use the practice range from 9 a.m. until the first tee time. Buses will leave the hotel at 9 a.m. to transport both tennis players and golfers to the country club.

For you golfers, the Oak Cliff Country Club was the home of the Dallas Open Golf Tournament for six years before the tournament was moved to Preston Trails and renamed the Byron Nelson Classic.

Joggers, get your running shoes on and come join Dr. Charles Ogilvie for daily runs. Dr. Ogilvie, in cooperation with the TCOM Institute of Human Fitness, is planning two runs on Thursday and Friday and one run on Saturday.

the Sustaining Members with their white hats on. They will be more than happy to help you sign up. Don't miss this great opportunity to attend a fun-filled party and to win a steer, which is being donated by Drs. Haman and Finch.

The morning runs will begin at 6 a.m. and the evening runs will be at 5 p.m. A stretching session will precede each three-mile run. Word from Dr. Ogilvie is that each run will be "at an easy pace."

Don't forget to pack all those necessary extras if you plan to participate in these activities. Registration for the golf and tennis tournaments will be required. Registration blanks are located in this *Journal* with the convention registration forms.



## Auxiliary

Meeting in conjunction with the TOMA convention will be the annual meeting of the Auxiliary to TOMA. The ATOMA House of Delegates will meet at 8:15 a.m., Thursday, May 10. President Faye Coleman extends an invitation to all members, whether a delegate or not, to attend the meeting.

Throughout the convention the Auxiliary will host a hospitality room on the mezzanine level of the hotel. All conventioners are invited to stop by and relax in the ATOMA Hospitality Room.

A special treat for the ladies has been planned by Convention Chairman Sandy Kratz. Arrangements have been made for a three-hour escorted underground shopping tour of Dallas, Saturday afternoon, May 12. According to Mrs. Kratz, the tour will visit several bargain stores and will last from 1:30-4:30 p.m. Be sure to bring your money because you will have an opportunity to purchase clothes at these stores!

## Exhibits

All convention participants are urged to make the rounds and visit with our exhibitors as much as possible during the convention. As of press time we have 97 exhibitors and three grantors that have pledged their support to the profession by participating in the convention.

Don't forget, the traditional Champagne With Exhibitors will be held at 5:30 p.m., Thursday, May 10. Visit as many exhibitors as possible during this event. Make our exhibitors feel welcome at the 80th Annual TOMA Convention. Support these exhibitors, they support you!

Cost for the tour will be \$5 per person. If you plan to attend, be sure to fill out the reservation form and return it to the convention registration desk no later than noon Friday, May 11.

The official national visitor from the Auxiliary to the AOA will be Mrs. Anita Stark, national president. Mrs. Stark will be the guest of ATOMA during the convention.

Make plans to attend the Ladies Brunch at 10:30 a.m., Friday, May 11. This year's brunch will be held in the hotel and Mrs. Kratz promises a surprise menu for the luncheon. Don't miss this event!

## Alumni

Alumni from the various colleges of osteopathic medicine will get together again this year for individual breakfast meetings. These meetings are slated for 7 a.m., Friday, May 11.

## ACGP Breakfast

Dr. Joseph Guzik of Roselle, New Jersey, national president of the American College of General Practitioners (ACGP) will be featured speaker for the Texas Society of ACGP during the upcoming convention.

This year's ACGP meeting will be a breakfast and is scheduled for 7:30 a.m., Saturday, May 12, according to Dr. T. Robert Sharp, secretary.

President of the Texas Society of ACGP is Dr. Mary M. Burnett of Dallas. Succeeding her into the presidency will be Dr. Dareld R. Morris of Smithville. Dr. Morris will be installed at the breakfast meeting.

Dr. Sharp urges all members of the Texas Society to make plans to attend this breakfast and hear Dr. Guzik.

*Enter the world of the Hyatt Regency and let the valet open the doors to the 21st century.*

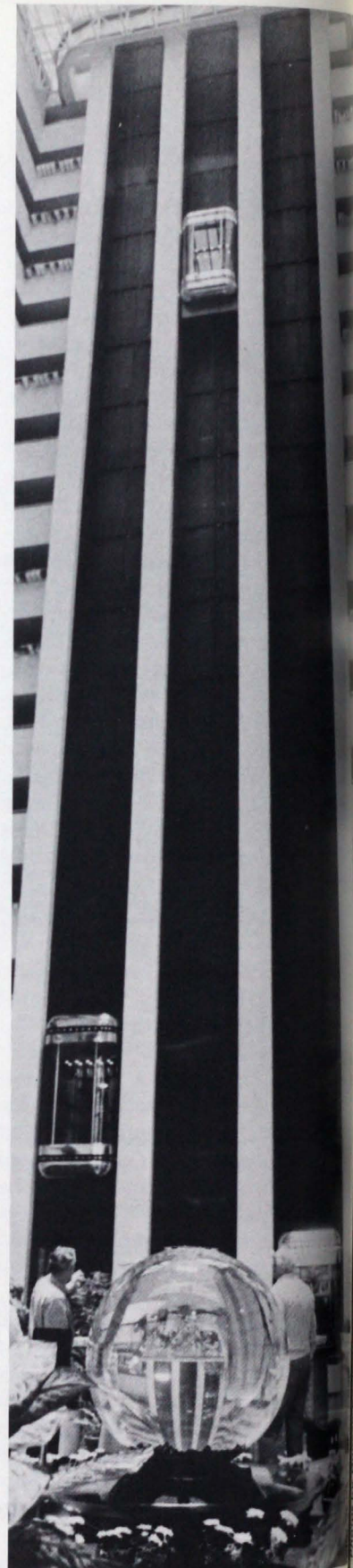
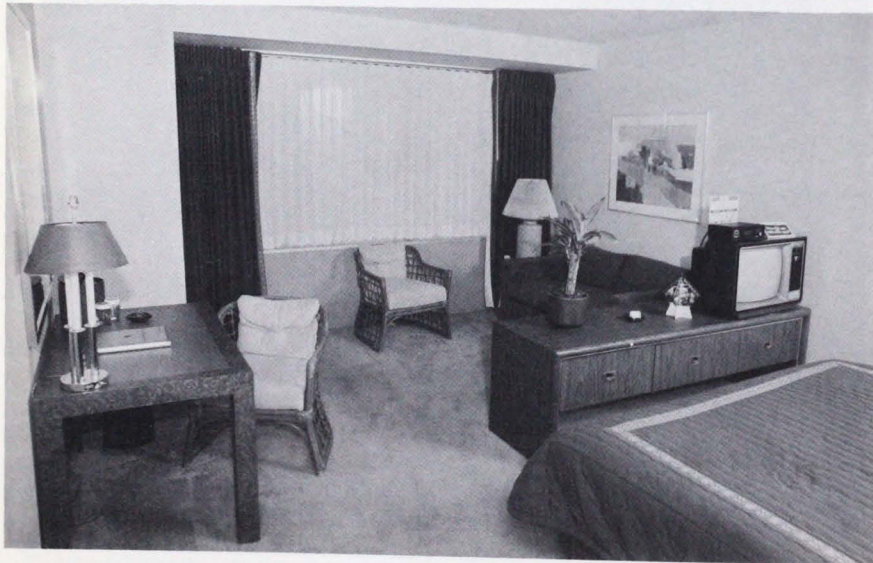




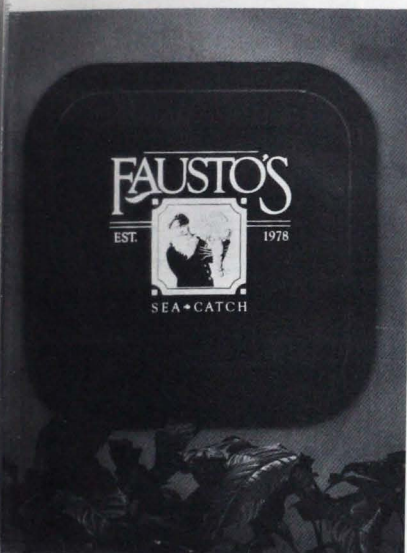
# HYATT REGENCY:

## Designed for the 21st Century

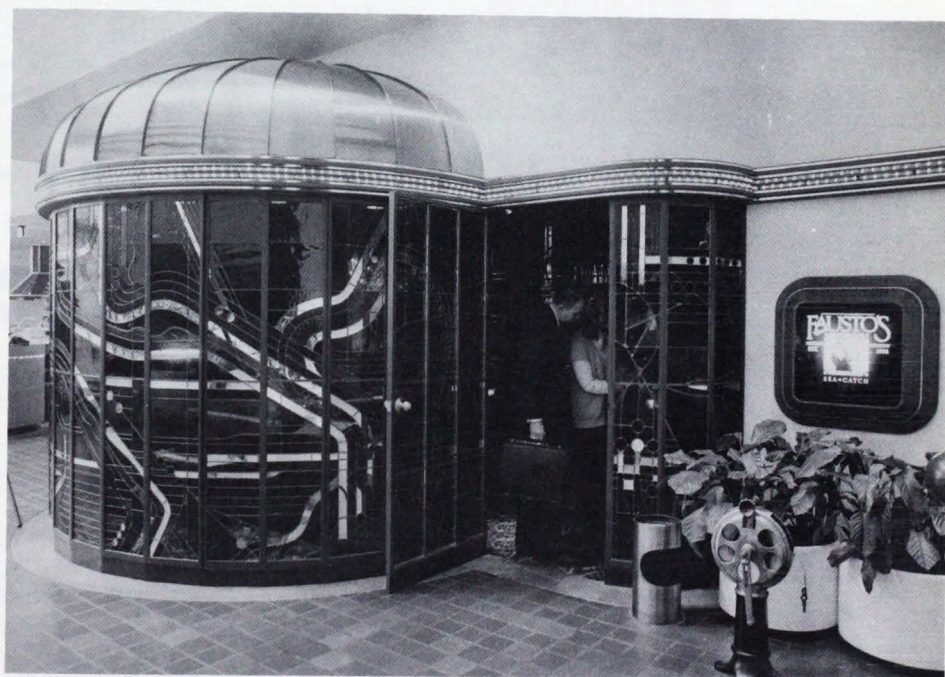
*Right: A futuristic lucite crystal ball-like sculpture greets conventioners atop the Hyatt escalators. Far Right: Indoor glass elevators offer an all encompassing view of the lobby interior. Below: Spacious guest rooms provide a place to "get away from it all."*







*Left and Below: For the catch of the sea, visit Fausto's Restaurant and feel as if you are diving to the depths of the ocean for your favorite culinary delight.*



*Far Left: The second level circular desk is adorned with a waterfall and open air lounge.  
Bottom Left: A gold and white chandelier adorns the Board Room, one of the Hyatt's elegant meeting rooms.*



# Convention Program

## May 8

1:00 p.m. TOMA Board of Trustees Meeting

## May 9

8:00 a.m. TOMA House of Delegates Registration  
 9:00 a.m. TOMA House of Delegates Meeting  
 NOON TOMA House of Delegates Luncheon  
 1:00 p.m. TOMA House of Delegates Meeting  
 1:00-5:00 p.m. Early Registration  
 1:30 p.m. ATOMA Pre-convention Board Meeting

## May 10

8:00 a.m.-5:00 p.m. Registration  
 8:00 a.m.-5:00 p.m. ATOMA Hospitality Room  
 8:00 a.m. Visit Exhibits  
 8:15 a.m. ATOMA House of Delegates Meeting  
 8:30-9:30 a.m. "Eye Signs In Office Practice"  
 Kenneth Stover, D.O.  
 9:30-10:00 a.m. "Cephalgia Classifications"  
 Paul Flaggman, D.O.  
 10:00-10:30 a.m. "Office Management of Cephalgia"  
 Paul Flaggman, D.O.  
 10:30-11:30 a.m. Case Clinic  
 Kenneth Stover, D.O.  
 Paul Flaggman, D.O.  
 NOON Keynote Luncheon  
 1:30-2:00 p.m. Visit Exhibits  
 2:00-2:30 p.m. "Manipulative Therapy in Management of Cephalgia"  
 Edmund Tyska, D.O.  
 2:30-3:30 p.m. "Chronic Convulsive Disorders - Types and Treatment"  
 Herbert I. Leiman, M.D.

3:30-4:00 p.m.

"Common Neurologic Problems"  
 Kenneth Stover, D.O.

4:00-5:00 p.m.

"The Chronic CVA Patient - Continuing Management in the Physicians Office"  
 Herbert I. Leiman, M.D.

5:30 p.m.

Champagne With Exhibitors

6:00 p.m.

Past Presidents Reception

6:30 p.m.

Sustainer Party (buses leave)

## May 11

7:00 a.m. Alumni Breakfasts  
 8:00 a.m.-5:00 p.m. Registration  
 8:00 a.m.-5:00 p.m. ATOMA Hospitality Room  
 8:00-8:30 a.m. Visit Exhibits  
 8:30-9:35 a.m. Video Tape "The Problem Oriented Medical Record"  
 Lawrence Weed, M.D.  
 9:00 a.m. Tennis Tournament  
 (buses leave at 9 a.m.)  
 9:35-10:30 a.m. Explanatory Lecture  
 Richard Baldwin, D.O.  
 10:30-11:30 a.m. Application and Discussion  
 10:30 a.m. Ladies Brunch  
 11:00 a.m. Golf Tournament  
 (buses leave at 9 a.m.)  
 NOON AOA President-elect Luncheon  
 Honoring Dale Dodson, D.O.  
 1:30-2:00 p.m. Visit Exhibits  
 2:00-3:00 p.m. "Clinical and Laboratory Evaluation of the Patient With Chronic Liver Disease"  
 Phillip Cohen, D.O.  
 3:00-3:30 p.m. "Office Management of the Cirrhotic"  
 Chester Godell, D.O.  
 3:30-4:00 p.m. "Management of the Patient With Chronic Recurrent Hepatitis"  
 Chester Godell, D.O.  
 4:00-4:30 p.m. Panel Discussion  
 Phillip Cohen, D.O.  
 Chester Godell, D.O.



0 p.m. President's Reception  
 0 p.m. President's Dinner  
 0 p.m. President's After Dinner Show

# May 12

0 a.m. Texas GP Breakfast or Breakfast on Your Own  
 0 a.m.-2:00 p.m. Registration  
 0 a.m.-2:00 p.m. ATOMA Hospitality Room  
 0-8:30 a.m. Visit Exhibits  
 0-9:00 a.m. "Radiologic Evaluation of the Patient With Peptic Ulcer Disease"  
 John C. Kemplin, D.O.  
 0 a.m. ATOMA Post Convention Board Meeting  
 0-9:45 a.m. "Endoscopic Evaluation of the Patient With Peptic Ulcer Disease"  
 Jay G. Beckwith, D.O.  
 5-10:45 a.m. "Office Management of Peptic Ulcer Disease"  
 Jay G. Beckwith, D.O.

10:45-11:30 a.m. *Panel Discussion*  
 Jay G. Beckwith, D.O.  
 Charles R. Cueto, D.O.  
 John C. Kemplin, D.O.  
 NOON Lunch on Your Own  
 Buses leave for TCOM at 12:30 p.m.  
 1:00 p.m. TOMA Post Convention Board Meeting  
 2:00-2:30 p.m. "Evaluation of the Patient With COPD (Chronic Obstructive Pulmonary Disease)"  
 Charles R. Cueto, D.O.  
 2:30-3:00 p.m. "Radiologic Evaluation of the Patient With COPD"  
 Stanley R. Briney, D.O.  
 3:00-3:45 p.m. "Radiologic Characteristics of Bacterial Pneumonias"  
 Stanley R. Briney, D.O.  
 3:45-4:30 p.m. "Bacterial Pneumonias — Epidemiology and Selection of Therapy"  
 Norman M. Kopman, D.O.  
 5:00 p.m. Buses leave TCOM to return to Dallas  
 6:30 p.m. Time Tunnel Fun Night

## WHERE WOULD YOU LIKE TO PRACTICE MEDICINE?

### THE AIR FORCE WILL DO ITS BEST TO ASSIGN YOU THERE.

Germany or Little Rock — Alaska or Tucson, Arizona — whatever your geographical preference, we'll work to place you there. And you'll know the assignment before you are committed. This is just one of the many advantages for physicians in Air Force medicine. We also provide excellent salaries, 30 days of paid vacation each year; and for qualified physicians, an opportunity to train in a specialty area. Most importantly, we provide an environment in which you can practice medicine. And the support to eliminate your involvement in paperwork. We would like to tell you more about Air Force medicine. Contact



your Air Force Recruiter by calling Master Sergeant George Stephenson, collect, 817-461-1946...or write: Air Force Medical Recruiting, 2621 Ave. E East, Suite 217, Arlington, TX 76011.



AIR FORCE. HEALTH CARE AT ITS BEST.



# **TOMA Supporters Reach Record High**

ABBOTT LABORATORIES  
AMERICAN MEDICAL INTERNATIONAL  
ARMOUR PHARMACEUTICAL COMPANY  
AYERST LABORATORIES  
BLUE CROSS BLUE SHIELD OF TEXAS  
BOEHRINGER INGELHEIM, LTD.  
BOOTS PHARMACEUTICALS, INC.  
BRISTOL LABORATORIES  
BRONSON PHARMACEUTICALS  
CIBA PHARMACEUTICAL COMPANY  
COMATIC LABORATORIES, INC.  
CORNISH MEDICAL PRODUCTS  
DA VINCI LABORATORIES, INC.  
DISTA PRODUCTS COMPANY  
DOCTORS HOSPITAL — HOUSTON  
DOME LABORATORIES  
DOW CHEMICAL, U.S.A.  
ENDO LABORATORIES, INC.  
FINNAIR  
FLINT LABORATORIES  
FORT WORTH OSTEOPATHIC HOSPITAL  
FRIGITRONICS OF CONNECTICUT, INC.  
GEIGY PHARMACEUTICALS  
GENERAL MEDICAL  
HILL LABORATORIES  
HOECHST-ROUSSEL PHARMACEUTICALS  
INTERNATIONAL MEDICAL ELECTRONICS  
IVES LABORATORIES, INC.  
KIRKSVILLE COLLEGE OF  
OSTEOPATHIC MEDICINE  
KREMERS-URBAN COMPANY  
LANPAR COMPANY

LEDERLE LABORATORIES  
LEMMON PHARMACAL COMPANY  
MALLINCKRODT, INC.  
MARION LABORATORIES  
MC NEIL LABORATORIES  
MEAD JOHNSON NUTRITIONAL DIV.  
MEAD JOHNSON PHARMACEUTICAL DIV.  
MEDICAL COMPUTER SYSTEMS  
MEDTRONIC, INC.  
MERCK, SHARPE & DOHME (2)  
MERRELL-NATIONAL LABORATORIES  
METRO-MED, INC.  
MEYER LABORATORIES  
MILEX SOUTHERN, INC.  
NATIONAL HERITAGE INSURANCE COMPANY  
NOBEL PHARMACEUTICAL, INC.  
NUTRI-DYN DIST.  
ORGANON PHARMACEUTICALS  
ORTHO PHARMACEUTICAL CORP.  
PENNWALT PHARMACEUTICAL  
PFIZER LABORATORIES  
PHONE-A-GRAM SYTEMS  
WM. P. POYTHRESS & COMPANY  
PROFESSIONAL MUTUAL INSURANCE COMPANY  
RAN-M-INC.  
REED CARNRICK PHARMACEUTICALS  
A. H. ROBINS COMPANY  
ROCHE LABORATORIES  
WM. H. RORER, INC.  
SANDOZ PHARMACEUTICALS  
W. B. SAUNDERS COMPANY  
SMITH KLINE & FRENCH LABORATORIES



SOUTHWEST & JOHNSON X-RAY  
 SOUTHWEST MEDICAL LABORATORIES  
 E. R. SQUIBB & SONS, INC.  
 STUART PHARMACEUTICALS  
 SYNTEX LABORATORIES, INC.  
 TEXAS BANK & TRUST COMPANY  
 TEXAS COLLEGE OF  
     OSTEOPATHIC MEDICINE (2)  
 TEXAS COMMERCE TRUST COMPANY  
 TEXAS DEPARTMENT OF HEALTH  
 TEXAS INSTITUTE FOR MEDICAL ASSESSMENT  
 TEXAS MEDICAL FOUNDATION  
 TEXAS STATE BOARD OF  
     MEDICAL EXAMINERS  
 TEXAS VITAMIN COMPANY  
 TRAVENOL LABORATORIES, INC.  
 TUTAG PHARMACEUTICALS, INC.  
 UAD LABORATORIES  
 THE UPJOHN COMPANY  
 U. S. AIR FORCE  
 U. S. ARMY MEDICAL DEPT.  
 U. S. NAVY  
 WALLACE LABORATORIES  
 WARNER-CHILCOTT LABORATORIES  
 WARREN-TEED LABORATORIES  
 WEAPONS CORPORATION OF AMERICA  
 WEST TEXAS SURGICAL SUPPLY  
 WESTERN RESEARCH LABORATORIES  
 WYETH LABORATORIES  
 X-RAY SALES AND SERVICE CO.  
 ZIMMER-TEXAS

## grantors

ELI LILLY AND COMPANY  
 PARKE - DAVIS & COMPANY  
 ROSS LABORATORIES

## declinations

ALCON LABORATORIES  
 C. R. BARD & COMPANY  
 BAYLOR LABORATORIES  
 BIRD CORPORATION (3M)  
 ENZYME PROCESS SALES  
 J. B. LIPPINCOTT COMPANY  
 NORWICH-EATON PHARMACEUTICALS  
 PHYSIO - CONTROL  
 SAVAGE LABORATORIES  
 SURGIKOS  
 TEXAS HOSPITAL SUPPLY  
 U. S. SURGICAL CORPORATION

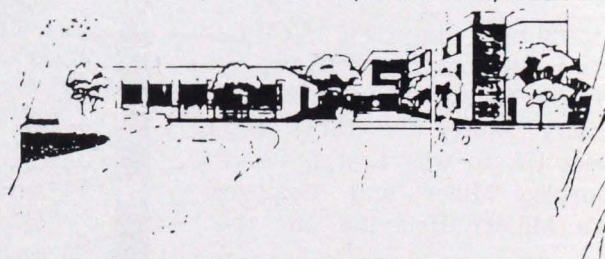
### our 287-bed hospital offers the physician

AN OPPORTUNITY . . . for professional growth  
 with a growing not-for-profit medical facility  
 with an outstanding need for many physicians  
 in the heart of the Dallas-Fort Worth Metroplex.

SECURITY . . . \$36,000 first year guarantee

A CHALLENGE . . . for continued excellence in intern-  
 ship and residency programs, as well as a comprehensive  
 continuing medical education program for the 80 osteo-  
 pathic and allopathic physicians presently on the staff.

A COMMITMENT . . . for providing the best diagnostic  
 and treatment capabilities available for the citizens of our  
 community; at present offering cobalt treatment, LASER  
 surgery, nuclear medicine department, and many other  
 services not usually found in hospitals of comparable size.



### Grand Prairie Community Hospital

2709 Hospital Blvd. Grand Prairie, Texas 75051  
 CONTACT: Richard D. Nielsen, Administrator  
 214-647-1141, Extension 200

"Ours is a health care facility that will not be content  
 with less than excellence in everything we do."



# District Communiqués

## DISTRICT III

by H. George Grainger, D.O.

Mr. Everett Taylor is the big man around the *Tyler Courier-Times Telegraph* busy editorial offices. Seems like he really does his homework, too. In spite of all the other "literature" that Mr. Taylor must daily wade through, he still has time to peruse the *Texas Osteopathic Physicians Journal* that our state office sends him every month.

Editor Taylor, in addition to running the editorial department of both Tyler newspapers and writing clear headed editorials in them, has an entertaining column on the front page of the Sunday combined edition every week.

One Sunday last February Taylor wrote up in his column about the piece in the January *Texas Osteopathic Physicians Journal* Communique page regarding the old Tyler Coats-Gafney Hospital being hailed by the Tyler Historical Society, and the Tyler Museum of Art, as a classic example of period architecture. Perspicacity—that's the word for Mr. Everett Taylor.

\*\*\*\*\*

Attending the big Family Practice Seminar in Houston, put on by the Harris County group late February, were five D.O.s from District III, to wit: Lester, Lester, McCorkle, Miller and Grainger. Who's Miller? He's the one that

never comes to District III meetings.

\*\*\*\*\*

It is official, Bruce Petermeyer is now certified in Internal Medicine, Certificate 375, Secretary Crowell said so. Which, by the way, makes five members of Doctors-Memorial professional staff who hold board certificates. Then there is another who is board eligible and working hard toward the coveted document.

\*\*\*\*\*

Well, our Dave Norris is making news again. It says here in the Tyler paper that Norris told the East Texas Chapter of the International Management Council "How to Recognize the Use of Drugs In Industry and at Home," in mid February. The paper goes on that Dave had received the award of Outstanding President by the Civitan Club in 1975. I didn't know that!

\*\*\*\*\*

Everybody said we had a wonderful meeting St. Patrick's Day. President Flanagan was in rare form as he talked to a setting room only crowd. Fact is, three tables had to be brought in to sit everybody.

\*\*\*\*\*

Regarding business, Dr. Bruce Petermeyer was elevated to District presidency while Don Lash was voted president-elect; Dr. John Turner, Jr., vice president; and your correspondent, again as secretary-treasurer. Delegates for the state meeting are Dr. David Norris, chairman, Drs. Earl Kinzie, William Clark, John Turner, Jr., and Robert Hamilton. Alternates named were Drs. Pock, Kerry Rasberry, Don Lash, Anton Lester, Jr. ▲

## Bank Financing for Osteopathic Physicians

We specialize in equipment leasing and financing, unsecured loans and lines of credit to Osteopathic Physicians. And we handle it all by mail.


Unsecured loans with optional dollar amounts (to \$10,000), optional payment schedules. Equipment leasing to give you tax advantages, restore operating capital, convert unused depreciation to cash. And lines of credit to provide for future cash needs.

We charge tax deductible bank rates. You won't spend any of your valuable time at your bank, and you'll reserve your regular bank credit for times when you really need it.

For further information, complete and mail this coupon today. I want to know more about:

- ☐ Unsecured Loans   ☐ Sale & Lease Back Plans   ☐ A Line of Credit  
☐ Lease-Purchase Plans   ☐ Equipment Leasing   ☐ Equipment Financing  
☐ Other: \_\_\_\_\_

Dr. \_\_\_\_\_ Phone \_\_\_\_\_  
Address \_\_\_\_\_ City \_\_\_\_\_ State \_\_\_\_\_ Zip \_\_\_\_\_

 **TEXAS BANK  
AND TRUST COMPANY**  
Professional Services Division  
P. O. Box 101 Jacksonville, Texas 75766

**GEORGE E. MILLER, D.O.**

**PATHOLOGIST**

**P.O. BOX 64682**

**1721 N. GARRETT**

**DALLAS, TEXAS 75206**



# Texas Ticker Tape

## DR. HAMAN ELECTED TO OFFICE

Robert G. Haman, D.O. of Irving has been elected vice-president of the American College of General Practitioners in Osteopathic Medicine and Surgery.

## DR. ENGLISH RECEIVES APPOINTMENT

Wayne English, D.O., of Fort Worth has been named to the Board of Trustees of the American Osteopathic College of Rehabilitation Medicine.

## HUGULEY MEMORIAL HOSPITAL ANNOUNCES APPOINTMENTS

Nelda Cunniff, D.O., of Burleson has been elected secretary of the medical staff at Huguley Memorial Hospital in Fort Worth and Forrest L. Kennedy, D.O., of Mansfield has joined the staff. The hospital has a joint staff and is located on Fort Worth's south side.

## MAY DESIGNATED HIGH BLOOD PRESSURE MONTH

In an effort to make the general public aware of the problems that can occur from high blood pressure, the month of May has been designated High Blood Pressure Month. Make sure you do your part and inform your patients about the importance of having their blood pressure checked.

## DOCTORS-MEMORIAL HOSPITAL TYLER, TEXAS



Open Staff Osteopathic Hospital in Beautiful East Texas

**54 beds**

**6 bassinets**

**2 surgeries**

*Professional Staff*

GENERAL SURGERY

Keith L. Hull, D.O.

ORTHOPEDIC SURGERY

Edward Rockwood, D.O.

ANESTHESIOLOGY

Edmund F. Touma, D.O.

INTERNAL MEDICINE

Bruce Petermeyer, D.O.

RADIOLOGY

Donald R. Lash, D.O.

Mr. Olie Clem, Administrator

1400 Southwest Loop 323

\*

Tyler, Texas 75701

\*

Phone: 214-561-3771



# New Services Sought at Osteopathic Hospital

Southwest Osteopathic Hospital has filed an application with the Panhandle Health Systems Agency for a certificate of need for two new services at the medical facility in Southwest Amarillo, according to a report in the *Amarillo News-Globe*.

"Our application is for only \$70,000," said W. L. Davis, hospital administrator. "Ordinarily it is not necessary to file for a certificate if the expenditure is below \$100,000, unless a change in services or an addition of services is planned. We had to file because we are seeking an addition of services."

The hospital seeks to convert 1,182 square feet of space from general patient use to two special care units.

"We want to convert half of the space to a two-bed intensive care unit and the other half to a two-bed coronary care unit," Davis said.

The administrator said the hospital has not provided the intensive and coronary care units in the past because no qualified specialist was on the hospital staff.

"We are adding an internist-cardiologist to our staff in May," he said, "and will be able to adequately care for coronary patients and other critically ill patients at the hospital."

Davis said the hospital has been forced to transfer high-risk patients to other local medical facilities because of the deficiency in critical care staff at Southwest Osteopathic.

"When a high-risk patient is moved, the risk becomes even greater," he said.

The hospital conducted a survey last year, said Davis, which showed Southwest Osteopathic Hospital moved an average of seven patients a month to other hospitals with ICU or CCU facilities.

The application for the certificate of need includes results from the hospital survey and another survey of local osteopathic physicians. The physician survey shows an average of 15 patients per month were sent to other local hospitals "which otherwise would have been sent to Southwest Osteopathic Hospital" because their condition was critical and the patients needed intensive care. ▲

when you recommend  
enzymes

why not the leader?



**ENZYME PROCESS**



it's our name!  
enzyme chemistry for over 25 years

## **523 tabs** DIGESTIVE AID (Pancreatin)

Each tablet supplies:

- Trypsin, chymotrypsin, amylase and lipase enzymes from pancreatin and raw pancreas standardized as follows

20,000 NF Units protease

20,000 NF Units amylase

1,600 NF Units lipase

Equivalent to 800 mg. Pancreatin

Enzymes are protected from destruction by stomach acids with cellulose coating and buffers --- U.S. Pat. Applied For

**enzyme process company**

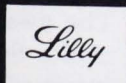
2516 Highway 80 East, Mesquite, Texas 75149  
(817) 285-0367



**contains no aspirin**

tablets  
**Darvocet-N<sup>®</sup> 100** (IV)

100 mg. Darvon-N<sup>®</sup> (propoxyphene napsylate)  
650 mg. acetaminophen



700565

Additional information available  
to the profession on request from  
Eli Lilly and Company  
Indianapolis, Indiana 46206

Eli Lilly and Company, Inc.  
Carolina, Puerto Rico 00630



## PRIVATE PRACTICE

*In association with...*

# OPPORTUNITIES

COMMUNITY  
HOSPITAL OF  
LUBBOCK

- General Practice
- Anesthesiology
- Obstetrics / Gynecology
- Orthopedic Surgery

Generous guarantee of  
annual gross billings,  
Free office rent  
Other financial assistance  
available.

### Contact:

Joyce R. Wallace, Director  
Physician Relations  
National Accommodations, Inc.  
4070 Laurel Canyon Boulevard  
Studio City, California 91604  
or call collect (213) 985-8386

# ACADEMIA

## News From The Colleges

### CCOM

Shafer A. Gross has been named vice-president - corporate controller and Julian Jacobson has been named vice-president - human resources for the Chicago College of Osteopathic Medicine.

Gross has served as CCOM's controller since 1973. Prior to that, he served as director of finance-controller for Norwegian-American Hospital in Chicago and vice-president-fiscal affairs for Riveredge Hospital, Forest Park, Illinois, and assistant controller for Research Hospital and Medical Center, Kansas City, Missouri. He holds a B. S. in Business Administration and Accounting from Kansas State Teachers College in Pittsburgh, Kansas.

Jacobson has served as assistant to CCOM president Thaddeus P. Kawalek since 1977. Prior to that appointment, he served as director of personnel, G. R. I. Corporation, a position he held since 1971.

### OU-COM

John W. Knable, D.O., of Cleveland has been appointed chairman of the Department of Osteopathic Medicine at the Ohio University College of Osteopathic Medicine effective June 1, 1979.

Presently Knable is serving as chairman of the Department of Internal Medicine at Richmond Heights General Hospital. Prior to this appointment, he was the director of the intensive care unit of Brentwood Hospital in Warrensville Heights, Ohio, for five years.

### PCOM

Facilities for acute hemodialysis have been installed at the Hospital of Philadelphia College of Osteopathic Medicine. Alfred A. Meltzer, administrator, made the announcement.

The new service is provided by the hospital's department of internal medicine. Co-directors of the unit are William A. Nickey, D.O., clinical assistant professor of internal medicine and chairman of the division of nephrology, and Stephen Levin, D.O., clinical assistant professor. Both Drs. Nickey and Levin are board certified in internal medicine and in the subspecialty of nephrology.

### TCOM

Dr. Steven Cordas, associate professor of medicine at Texas College of Osteopathic Medicine has been named recipient of the John J. Miller Biomedical Award by the International Academy of Preventive Medicine.

The award is presented annually to the person who has contributed the most to biomedical/biochemical applications of preventive medicine and to further the purposes of the organization, said Executive Director John Nowell.

The award was presented March 9 at the Spring Conference of the International Academy of Preventive Medicine in Dallas. ▲

**DAVID H. LEECH, D.O., F.C.A.P.**

Associate-Affiliated Pathology, P.A.  
Hospital & Medical Lab Consultant

1401 Scripture  
Denton, Texas 76201



# Proposed Changes to TOMA Bylaws

Following are the proposed changes to the TOMA Constitution and Bylaws as submitted by T. Eugene Schary, D.O., chairman of the Constitution and Bylaws Committee. These changes will be voted on by the TOMA House of Delegates on May 9.

Bylaws

*Article V, Section 1 — Insert "Immediate Past President" after "President-Elect".*

*Article V, Section 8 — Delete "and the Immediate Past President".*

*Article XI, Section 2 — Delete entire Section 2 and insert the following as new Section 2: All members in good standing shall be permitted to register and attend all business, educational, and social functions of the annual meeting by paying the prescribed registration fee and their current dues. ▲*

## TAX ACT OF '76

May Have Adversely Effected  
Your Financial Plans

Changed Areas

Estate Tax      Gift Tax      Keogh Plans

Pension & Profit Sharing Plans

Disability Income

Income Tax

Life Insurance

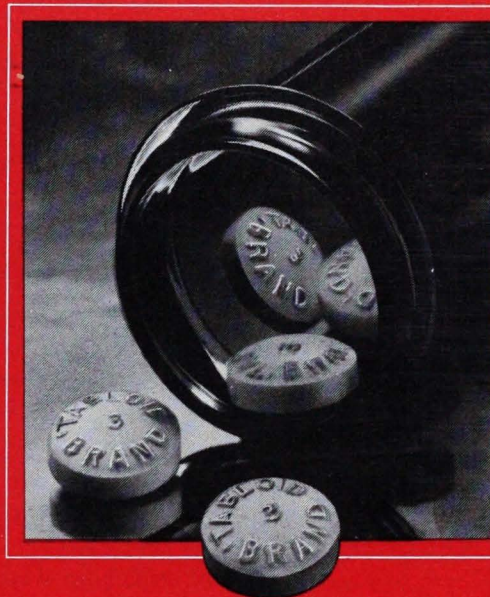
For Information Call or Write:

**WHD**

William H.

Dean and Associates  
ESTATE ANALYSTS

Suite 215 — University Plaza Bldg.  
Fort Worth, Texas 76107  
817-335-3214



## EMPIRIN<sup>®</sup> COMPOUND c CODEINE

Each tablet contains: aspirin, 227 mg; phenacetin, 162 mg; and caffeine, 32 mg; plus codeine phosphate in one of the following strengths: \*4-60 mg (gr 1); \*3-30 mg (gr ½); \*2-15 mg (gr ¼); and \*1-7.5 mg (gr ⅛). (Warning—may be habit-forming).



Burroughs Wellcome Co.  
Research Triangle Park  
North Carolina 27709



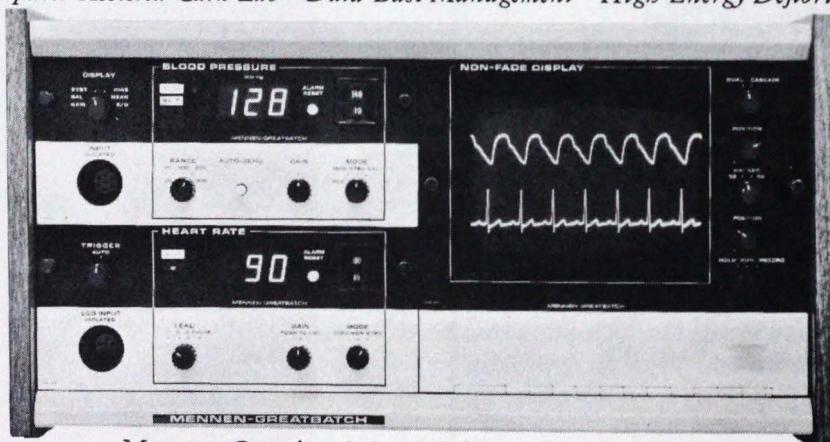
# GENTEC FEATURES A TEXAS EXCLUSIVE: MENNEN-GREATBATCH CLINICAL AND DIAGNOSTIC SYSTEMS

Invest in a Mennen-Greatbatch instrument or system from Gentec Hospital Supply and you get more than the leading patient monitoring equipment.

Gentec can assist you with complete department planning and layout, system design and integration, architectural and electrical outlines, educational aids and programs.

And when your MG equipment goes to work, Gentec backs it with 24-hour service and complete warranty coverage.

*See Gentec for the complete line of Mennen-Greatbatch systems, including:  
Telemetry Monitoring · Microprocessors In-Patient Monitoring  
Computer-Assisted Cath Lab · Data-Base Management · High-Energy Defibrillators*



Mennen-Greatbatch is available in Texas only from

## Gentec

HOSPITAL SUPPLY COMPANY

*Division of Foremost-McKesson, Inc. Terrell Supply Division*

FORT WORTH/DALLAS, P.O. Box 310 76101, (817) 336-8731, (214) 429-2566 / AMARILLO, P.O. Box 1587 79106, (806) 376-4696  
AUSTIN, P.O. Box 4415 78723, (512) 478-2559 / LUBBOCK, P.O. Box 2913 79408, (806) 763-4655 / SAN ANTONIO, P.O. Box 32107  
78216, (512) 344-0213 / HOUSTON, P.O. Box 1609 77001, (713) 237-9678



# TOMÄ Presents A Russian Holiday Study Tour

September 28 — October 6  
To

- MOSCOW
- LENINGRAD
- HELSINKI, FINLAND

## First Class Accommodations

Cost: \$998 per person  
tax deductible for physicians

## Fully Escorted

Deposit: \$150 per person  
Payable at time of booking

## TOUR PRICE INCLUDES

- \* All international transportation and transfers.
- \* Baggage-handling between airports and hotels.
- \* Twin-bedded rooms with private bath or shower
- \* All meals in the U.S.S.R.
- \* Fully escorted in the U.S.S.R.
- \* Sightseeing in Moscow and Leningrad with local English-speaking guides. Where inside visits are scheduled, entrance fees to museums, exhibits, etc.
- \* One theater performance in Moscow and one in Leningrad
- \* Professional visits to hospitals, institutions, and meetings with Russian doctors.
- \* Twin-bedded room with private bath or shower in Helsinki
- \* Dinner and continental breakfast
- \* City Sightseeing tour in Helsinki

Clip the coupon below and reserve a seat today.

NAME _____	
ADDRESS _____	
CITY _____	
PHONE (HOME) _____	(BUS.) _____
\$150.00 DEPOSIT PER PERSON ENCLOSED      CHECK	
MAIL TO	
 <b>RBIT INTERNATIONAL TRAVEL LTD.</b>	ATTENTION RAE MARTIN 211 north ervay st. dallas, texas 75201

**BE SURE TO VISIT BOOTH NO. 2 AT THE TOMA CONVENTION  
AND LEARN MORE ABOUT THE TOUR.**



# Friends, Colleagues 'Roast' Dr. Fisher

by Carol White  
Director of Community Relations,  
FWOH

Roy B. Fisher, D.O., chairman of the Board of Directors of Fort Worth Osteopathic Hospital, was honored February 28, with a surprise birthday celebration and "roast" at River Crest Country Club in Fort Worth.

Approximately 175 community leaders, professional colleagues, friends and family members paid \$50 each to wish the 69-year-old general surgeon and founder of the first osteopathic hospital in Fort Worth and a "Happy Birthday."

Proceeds totaling \$8,500 from the black-tie dinner, planned also as a tribute to the man in whose home Fort Worth Osteopathic Hospital had its beginnings, were donated to the hospital's building fund program that has to date raised more than \$1.5 million.

In addition to February 28 being

Dr. Fisher's birth date, it was one year ago—February 28, 1978—that he turned the first shovel of dirt at public groundbreaking ceremonies which marked the beginning of the current \$8.5 million renovation and construction project. Twelve months later, this most ambitious of hospital projects, providing for the expansion of the diagnostic and treatment areas, is half completed. Current plans call for extensive renovation of the existing facility to begin by mid-1979, with the occupation of the new addition to take place by the end of the year.

Roastmaster for the evening was Harris F. Pearson, D.O., a member of the FWOH Board of Directors.

Assisting Dr. Pearson with the roast were seven of Dr. Fisher's close friends and colleagues. Recal-

ling stories out of the past were told by Brig. Gen. Richard Burpee, a son-in-law; Phillip P. Saperstein, D.O.; Clifford Williams, minister of the First Baptist Church; Robert B. Beyer, D.O.; Claude C. Rainey, executive vice president and administrator of FWOH; George J. Luibel, D.O., a past president of the American Osteopathic Association; and Jay C. Beckwith, D.O.

Dr. Fisher and his wife of 25 years, the former Helen "Peggy" Josephine Markley, have four living children, and all were in Fort Worth for the surprise birthday party and roast. Son Tim Markley Fisher, who is with Cork 'n' Cleaver, came from Kansas City, Missouri. Martha Dalrymple (Fisher) Schoellkopf and her husband, Alan, a stockbroker with Rotan Mosle, were here from Dallas. Susan Faith (Fisher) McCaleb and her physician husband, William, an ophthalmologist, were in from Austin. Sally Dreve (Fisher) Burpee and her husband, Brig. Gen. Richard Burpee, are stationed at Fort Worth at Carswell Air Force Base and also were in attendance.

It was in Dr. Fisher's home, the old mansion once standing at 1400 Summit Ave., that Fort Worth Osteopathic Hospital made its first home when founded in June 1940. The Fisher family lived upstairs at this early address, eight or 10 bedrooms with operating room and nurse's station were on the floor below, and laboratory and x-ray services were in the basement.

Now in his fifth year as chairman of the Board of Directors which he has served as a member since 1974,

At Physician Recruiters of Houston, we understand the total need of the Physician and we can provide you with opportunities in:

- Solo - Practice
- Association both with group, partnership or shared facilities in clinic or hospital.
- Teaching or Emergency Room Positions.
- Industrial and other specialized clinic arrangements.

Thru our Medi-Clinic division we continue to serve the Physician by offering:

- Management services for the office or clinic.
  - Personal & Professional financial management, Insurance & Investments.
  - Temporary and Permanent Personnel Services.
  - Collection Services
  - Arrange lease or finance purchase of office space.
  - Medical Equipment & Supplies.
- We can help you with professional guidance.  
Call or write us today!

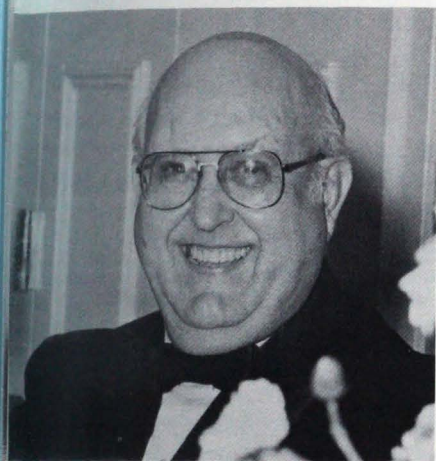
## PHYSICIAN RECRUITERS OF AMERICA

A DIVISION OF GENERAL STAFF PLACEMENT SERVICES

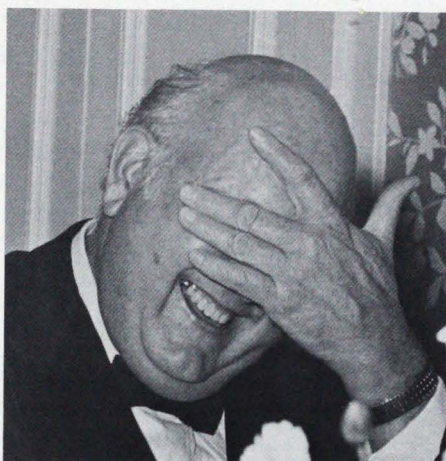
11105 BELLAIRE BLVD.  
SUITE #40  
HOUSTON, TEXAS 77072  
PHONE: (713) 498-0522

DEDICATED TO BRINGING PHYSICIANS AND COMMUNITIES TOGETHER FOR BETTER HEALTH CARE





*Roy B. Fisher, D.O. . . .*



*Embarrassing memories. . .*



*Enjoyable memories. . .*

hospital's beginning, Dr. Fisher is also a past president of the hospital's corporate body and one of its first members. Throughout the years, he has distinguished himself with service on nearly every FWOH committee and, for many years, acted as chairman of the hospital's Department of Surgery. On four different occasions, he has been elected chief of staff of the hospital which is today the State's largest osteopathic medical center with 200 patient beds.

Dr. Fisher is a clinical associate professor of surgery at the Texas College of Osteopathic Medicine and serves on the TCOM Advisory Council.

Certified by the American Osteopathic Board of Surgery, Dr. Fisher was graduated from Kirksville College of Osteopathic Medicine, Kirksville, Missouri, in 1933. He then entered into an internship at Wilshire Hospital, Los Angeles, California. Followed by a

move to Missouri in 1934, the Ohio native practiced briefly in that state before establishing a practice in Michigan. Dr. Fisher has been on the medical staff of Northway Clinic and Hospital, Mt. Pleasant, Michigan, and of Saginaw Osteopathic Hospital, Saginaw, Michigan, where he was chairman of the Department of Obstetrics. Before coming to Fort Worth in 1946, he entered into a surgical preceptorship at Laughlin Hospital, Kirksville, Missouri.

A member and past president of the Texas Osteopathic Surgical Society, Dr. Fisher is a past president of the Texas Osteopathic Hospital Association. He is also a past member of the Board of Directors of the American Cancer Society in Tarrant County.

Dr. Fisher maintains active memberships with the American Osteopathic Association, the American College of Osteopathic Surgeons and the Texas Osteopathic Medical Association.

Dr. Fisher is a member of Ridglea Presbyterian Church and has served on its Board of Elders for 25 years.▲

## DALLAS OSTEOPATHIC HOSPITAL

A NONPROFIT CHARITABLE INSTITUTION

Accredited by the  
American Osteopathic  
Association



Approved for  
Intern and Resident  
Training

Franklin E. Wells, Administrator  
H. Gill King, Ph.D., Director of Medical Education

5003 Ross Avenue

Dallas, Texas 75206

Phone 214-824-3071



# ATOMA News

by Mrs. D. Y. Campbell  
ATOMA News Chairman

I added another gem to my collection when I attended the ATOMA Mid-Year Board meeting on February 14 at the Dallas home of President Faye Coleman.

We were met at Love Field by our congenial chauffeur and ATOMA past president Wanda Puryear. The weather was beautiful—dry, sunny, temperature in the 70's. Attending the meeting were Linda Armbruster, Bea Wiltse, Cheryl Smith, Shelagh Dunlap, Sandy Kratz, Elaine Armbruster, Wanda, Faye, Kathy Speece and Joanne McGrath. After a morning of reports and study we took a short break for lunch. At two tables covered with mauve moire taffeta tableclothes, set with silver and Waterford and centerpieces of blooming Africian violets, we were treated to a delicious meal cooked and served by Faye's husband, Dr. Lee Coleman. Then back to work until about 4 p.m. when we caught our plane back to Houston. Faye's lovely home is a big "oldie"—a vintage home they have been restoring, and one that is a joy to tour.

So that was my gem—great company, good weather, beautiful surroundings, delicious food, a lot of business accomplished, and didn't spend too much money either. Alright!

At the meeting President-elect Linda Armbruster reported we now have 397 members. Vice-President and Program Chairman Inez Suderman spoke of the Time Tunnel Theme of State Convention. As news chairman, I recommended ATOMA draft a frame for two letters; one to reply to favorable comments that have been in the

news media about osteopathy, and one to reply to unfavorable comments. Faye appointed a committee to work on this and to have a letter ready for our liaison officer to present to TOMA for approval in May.

Funds Chairman Shelagh Dunlap reported that she and Lily Hause were working on a "Money Hat" for convention. This time it will feature 500 one dollar bills as decoration. Tickets for a chance to win this hat will be available soon from your district president or you may write to the state office for ticket information. They are to be sold for one dollar each and you are urged to *sell these tickets to the public* as well as buying and selling within the professional family.

The district selling the most tickets before convention will be recognized at Fun Night. District VI has issued a challenge! They say they will sell at least 1000 tickets and challenge any district in the state to top that.

Last year we cleared almost \$4000 on this Money Hat project. This year we want to make \$5,000. Ladies, can we do it?

The convention theme is outer space and the theme for Fun Night is a nostalgic trip through the Time Tunnel—with the years from 1950 to 1970 being recalled. Remember the good things of those years, come dressed in those styles, relax, and have a "real good time."

Our president, Faye Coleman reminds each ATOMA member you are very welcome as a guest in the House of Delegates. Just come take a seat in the back of the room and watch your delegates in action.

This year the Annual Report Book will have a memorial page and we ask every district to let us know of the death of any member during the past year so we can honor and remember her in this way. Please send information to Lois Campbell, 8319 Glenlea, Houston, Texas 77061.

## DALWORTH

Medical Laboratories, Inc.

*Accuracy/Service/Economy*

1410 W. Rosedale  
Fort Worth, Texas 76104  
Phone 817-336-0376

## OFFICE SPACE AVAILABLE

1250 sq. ft. includes five examining rooms.

Located on Main street in downtown Robstown.

Fifteen miles from Corpus Christi.

For more information write:

Glynn Schanen  
City Drug  
1500 E. Main  
Robstown, Texas 78380  
or call  
512-387-3425



*Notice To All Districts:* Your state historian is seeking clippings, pictures, and other items of interest from your district for the state scrapbook. Please participate in this, *Everyone*, so the scrapbook will represent all of us.

♦ ♦ ♦ ♦ ♦

*To All Districts:* Consider your membership. Do you have someone you would like to propose as an ATOMA Honorary Member? If so, check the bylaws and be ready to present this at May Convention. It's a nice thing to do, don't you agree?

♦ ♦ ♦ ♦ ♦

*All District Presidents:* When you send your annual report to me, be sure to include your new officers and addresses.

♦ ♦ ♦ ♦ ♦

I could tell from her report that Convention Chairman Sandy Kratz has done a lot of work planning the entertainment, (I'm not going to tell you what it is; let it be a surprise—the activities, general fun and pleasure for the ladies.) The Ladies' Luncheon will be extra nice. So, be there!

♦ ♦ ♦ ♦ ♦

Our husbands are members of a great and remarkable profession. I think they sometimes fail to realize just how really good they are, and

thus become discouraged. But let's not forget! Let us remember and support and remind them. One of the best ways to support them will be our united efforts as an auxiliary to inform the public about osteopathy. We wish to continue to benefit this profession in every way we can but keep in mind that we don't have united effort unless we first have individual effort.

See you in May!

P. S. Credentials Chairman, Elaine Armbruster, requests that all districts answer her letter asking for delegates so that instructions can be sent to them and their names included in the Annual Report Book. Also, *all unorganized districts*, you can have delegates—get in touch with Elaine by writing her at 3301 Windsor, Pearland, Texas 77581.

♦ ♦ ♦ ♦ ♦

Again, we remind you, it is not necessary to be a member of ATOMA to be a guest at the House of Delegates. The spouse of any D.O. is welcomed.

♦ ♦ ♦ ♦ ♦

Now, I'd like to thank my dear and faithful daughter for her help with this column during the past two years. She has corrected my spelling, put words where I put ---, deleted when I got carried away and typed to meet deadline. Thanks, Jenny.

## DISTRICT II

by Mrs. Brian Ranelle

District II Auxiliary members held a pot luck dinner March 13th at the home of Mrs. David Beyer. Intern and resident wives were invited for the social evening.

♦ ♦ ♦ ♦ ♦

Colonial Country Club was the setting for the March 20th District II dinner meeting. Dr. F. F. Cianochi, endocrinologist, presented the program for the physicians, while auxiliary members enjoyed a visit from the state President, Mrs. Lee Coleman.

♦ ♦ ♦ ♦ ♦

Dr. and Mrs. Lee Walker have a new grandson, Bartlee James Hall, born January 26, 1979 to their daughter Laurie and her husband. Congratulations to both families.

♦ ♦ ♦ ♦ ♦

"Speedy recovery" wishes are sent to Dr. W. A. Griffith and Mrs. Frank Wheeler who have recently been in Fort Worth Osteopathic Hospital. ▲

### POSITION AVAILABLE at FWOH in June

One residency position in Anesthesiology will be available beginning June 30, 1979, at Fort Worth Osteopathic Hospital, Fort Worth.

Offered after internship, the program is AOA approved at this expanding 200-bed hospital which serves as the primary teaching facility for the North Texas State University Health Sciences Center/Texas College of Osteopathic Medicine.

Contact: Director of Medical Education, Fort Worth Osteopathic Hospital, 1000 Montgomery Street, Fort Worth, 76107. Phone: 817-731-4311.

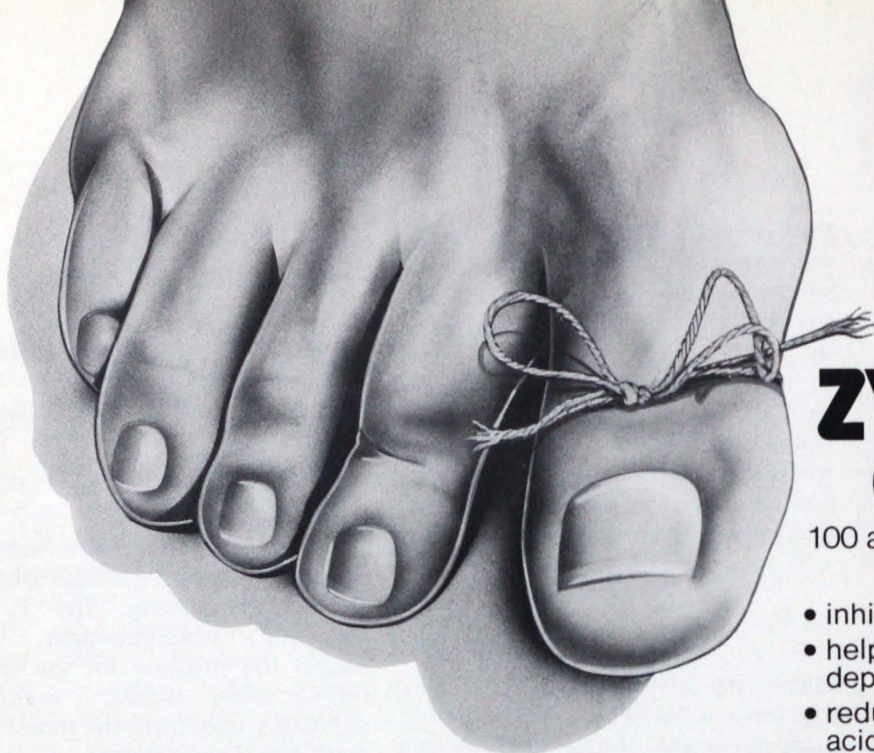
## THE X-RAY SALES & SERVICE CO.

X-Ray Equipment & Supplies  
Burdick EKG — Intensive Care  
Physiotherapy equipment  
Cuinier G-5 percussive apparatus  
Spinalator Tables

2530 Mansfield Highway  
Fort Worth, Texas 76119

P. O. Box 15344  
817-535-3251





A reminder

# ZYLOPRIM® (allopurinol)

100 and 300 mg scored Tablets

- inhibits uric acid formation
- helps prevent urate crystal depositions in synovia
- reduces risk of uric acid lithiasis

**INDICATIONS AND USE:** This is not an innocuous drug and strict attention should be given to the indications for its use. Pending further investigation, its use in other hyperuricemic states is not indicated at this time.

Zyloprim® (allopurinol) is intended for:

1. treatment of gout, either primary, or secondary to the hyperuricemia associated with blood dyscrasias and their therapy;
2. treatment of primary or secondary uric acid nephropathy, with or without accompanying symptoms of gout;
3. treatment of patients with recurrent uric acid stone formation;
4. prophylactic treatment to prevent tissue urate deposition, renal calculi, or uric acid nephropathy in patients with leukemias, lymphomas and malignancies who are receiving cancer chemotherapy with its resultant elevating effect on serum uric acid levels.

**CONTRAINDICATIONS:** Use in children with the exception of those with hyperuricemia secondary to malignancy. The drug should not be employed in nursing mothers.

**Patients who have developed a severe reaction to Zyloprim should not be restarted on the drug.**

**WARNINGS:** ZYLOPRIM SHOULD BE DISCONTINUED AT THE FIRST APPEARANCE OF SKIN RASH OR ANY SIGN OF ADVERSE REACTION. In some instances a skin rash may be followed by more severe hypersensitivity reactions such as exfoliative, urticarial and purpuric lesions as well as Stevens-Johnson syndrome (erythema multiforme) and very rarely a generalized vasculitis which may lead to irreversible hepatotoxicity and death.

A few cases of reversible clinical hepatotoxicity have been noted and in some patients asymptomatic rises in serum alkaline phosphatase or serum transaminase have been observed. Accordingly, periodic liver function tests should be performed during the early stages of therapy, particularly in patients with pre-existing liver disease.

Patients should be alerted to the need for due precautions when engaging in activities where alertness is mandatory.

Nevertheless, iron salts should not be given simultaneously with Zyloprim. This drug should not be administered to immediate relatives of patients with idiopathic hemochromatosis.

**In patients receiving Purinethol® (mercaptopurine) or Imuran® (azathioprine), the concomitant administration of 300-600 mg of Zyloprim per day will require a reduction in dose to approximately one-third to one-fourth of the usual dose of mercaptopurine or azathioprine. Subsequent adjustment of doses of Purinethol or Imuran should be made on the basis of therapeutic response and any toxic effects.**

**Usage in Pregnancy and Women of Childbearing Age:** Zyloprim® (allopurinol) should be used in pregnant women or women of childbearing age only if the potential benefits to the patient are weighed against the possible risk to the fetus.

**PRECAUTIONS:** Some investigators have reported an increase in acute attacks of gout during the early stages of allopurinol administration, even when normal or sub-normal serum uric acid levels have been attained.

It has been reported that allopurinol prolongs the half-life of the anticoagulant, dicumarol. This interaction should be kept in mind when allopurinol is given to patients already on anticoagulant therapy, and the coagulation time should be reassessed.

A fluid intake sufficient to yield a daily urinary output of at least 2 liters and the maintenance of a neutral or, preferably, slightly alkaline urine are desirable to (1) avoid the theoretic possibility of formation of xanthine calculi under the influence of Zyloprim therapy and (2) help prevent renal precipitation of urates in patients receiving concomitant uricosuric agents.

Patients with impaired renal function require less drug and should be carefully observed during the early stages of Zyloprim administration and the drug withdrawn if increased abnormalities in renal function appear.

In patients with severely impaired renal function, or decreased urate clearance, the half-life of oxipurinol in the plasma is greatly prolonged. Therefore, a dose of 100 mg per day or 300 mg twice a week, or perhaps less, may be sufficient to maintain adequate xanthine oxidase inhibition to reduce serum urate levels. Such patients should be treated with the lowest effective dose, in order to minimize side effects.

Mild reticulocytosis has appeared in some patients.

As with all new agents, periodic determination of liver and kidney function and complete blood counts should be performed especially during the first few months of therapy.

## ADVERSE REACTIONS:

**Dermatologic:** Because in some instances skin rash has been followed by severe hypersensitivity reactions, it is recommended that therapy be discontinued at the first sign of rash or other adverse reaction (see WARNINGS). Skin rash, usually maculopapular, is the adverse reaction most commonly reported.

Exfoliative, urticarial and purpuric lesions, Stevens-Johnson syndrome (erythema multiforme) and toxic epidermal necrolysis have also been reported.

A few cases of alopecia with and without accompanying dermatitis have been reported.

In some patients with a rash, restarting Zyloprim (allopurinol) therapy at lower doses has been accomplished without untoward incident.

**Gastrointestinal:** Nausea, vomiting, diarrhea, and intermittent abdominal pain have been reported.

**Vascular:** There have been rare instances of a generalized hypersensitivity vasculitis or necrotizing angitis which have led to irreversible hepatotoxicity and death.

**Hematopoietic:** Agranulocytosis, anemia, aplastic anemia, bone marrow depression, leukopenia, pancytopenia and thrombocytopenia have been reported in patients, most of whom received concomitant drugs with potential for causing these reactions. Zyloprim® (allopurinol) has been neither implicated nor excluded as a cause of these reactions.

**Neurologic:** There have been a few reports of peripheral neuritis occurring while patients were taking Zyloprim. Drowsiness has also been reported in a few patients.

**Ophthalmic:** There have been a few reports of cataracts found in patients receiving Zyloprim. It is not known if the cataracts predated the Zyloprim therapy. "Toxic" cataracts were reported in one patient who also received an anti-inflammatory agent; again, the time of onset is unknown. In a group of patients followed by Gutman and Yu for up to five years on Zyloprim therapy, no evidence of ophthalmologic effect attributable to Zyloprim was reported.

**Drug Idiosyncrasy:** Symptoms suggestive of drug idiosyncrasy have been reported in a few patients. This was characterized by fever, chills, leukopenia or leukocytosis, eosinophilia, arthralgias, skin rash, pruritus, nausea and vomiting.

**OVERDOSAGE:** Massive overdosing, or acute poisoning, by Zyloprim has not been reported.

**HOW SUPPLIED:** 100 mg (white) scored tablets, bottles of 100 and 1000; 300 mg (peach) scored tablets, bottles of 30, 100 and 500. Unit dose packs for each strength also available.

Complete information available from your local B. W. Co. Representative or from Professional Services Department PML.

U.S. Patent No. 3,624,205 (Use Patent)



**Burroughs Wellcome Co.**  
Research Triangle Park  
North Carolina 27709



# Opportunities Unlimited

Practice Locations in Texas

## PHYSICIANS WANTED

**AMARILLO** — Guaranteed income plus moving expenses for G.P.s and an internist. Urgently needed. Fast growing community in a city of 165,000. Contact W. L. Davis, Jr., Administrator of Southwest Osteopathic Hospital, 2828 West 27th, Amarillo, Texas, 79109. Phone: 806-355-8181.

**COMMERCE** — Excellent location just outside the Dallas-Fort Worth Metroplex. Community of 10,000 in Northeast Texas desires to attract physicians. High level of middle income families due to university located in the community. Facilities and medical staff include 30 bed hospital and other practicing physicians. Ideal climate, recreation and cultural opportunities in a community that cares. Contact Ron Robinson, Co-Chairman, Health Care for Commerce Committee, 1107½ Main Street, Commerce, Texas, 75428, Phone: 214-886-3950.

**CORPUS CHRISTI** — Energetic young G.P. to join with our group in a busy general practice. \$40,000 salary guarantee/ all ancillary services provided/professional liability insurance paid/ownership in Association offered after first year. Located in a growing area on the Gulf Coast. Drs. Ganz-Chodosh Association (512-884-4414).

**DALLAS** — Well established, large, successful D.O. clinic, with equipment for sale. Write Box "L", TOMA, 512 Bailey Avenue, Fort Worth, Texas, 76107.

**DALLAS** — Medical Director needed. New network of community health centers seeks physician with primary care orientation. Must be board eligible or certified. Texas license required. Prefer physician with ambulatory care system management experience. Candidate must be acceptable to medical school to receive appointment as clinical faculty. Challenging opportunity to develop model community health care system, primary, secondary, and tertiary care linkages established. Salary range \$48,000 - \$60,000 depending on qualifications and experience. Send curriculum vitae to Search Committee, Community Health Centers of Dallas, 1725 Corrigan Tower, 212 N. St. Paul, Dallas, Texas, 75201. Deadline for applications March 31, 1979. Position available by June 1, 1979.

**DALLAS SUBURB** — Mature, qualified general practitioner urgently needed to take over active acute general practice. Present physician has accepted a full time teaching position with TCOM. Gross income in six figures for 13 years. No welfare, 97 per cent collection experience, no malpractice suits, four miles out of Dallas city limits, 12 minutes to downtown Dallas. References required. Financial arrangements available. For more information, write Box "H", TOMA, 512 Bailey Avenue, Fort Worth, Texas, 76107.

**DALLAS** — Excellent practice opportunities for energetic General Practitioners interested in community D.O./M.D. hospital located in progressive city. Office space available adjacent to hospital for solo practice or join established physician. Guaranteed part time income through E. R. coverage up to \$45,000 annually. Contact: R. J. Halbrook, Administrator, East Town Osteopathic Hospital, 7525 Scyene Road, Dallas, 75227 or call 214-381-7171.

**DALLAS** — Unusual opportunities for hospital oriented practice. Solo or group practice locations. Guaranteed income. Staff membership available at 117-bed teaching hospital affiliated with Texas College of Osteopathic Medicine. Call collect, John Isbell, Administrator, Stevens Park Osteopathic Hospital, 2120 W. Colorado Blvd., Dallas, Texas, 75211. Phone 214-943-4631.

**DUNCANVILLE** — Near Dallas. One or two completely furnished and equipped office suites for lease. This 8,000 sq. ft. building already houses one G.P., one optometrist and one podiatrist. Contact: J. L. Hill, D.O., 113 South Main, Duncanville, 75116.

**FAMILY PHYSICIAN (D.O.)** — Needed for North East Texas town with practice area of 5,000+; Minimum salary guarantee; office rental and equipment purchase negotiable. Write Box "W", TOMA, 512 Bailey Avenue, Fort Worth, Texas, 76107.

**FORT WORTH** — North Texas State University Health Sciences Center/Texas College of Osteopathic Medicine faculty positions available. Clinical departments, family practice, specialties. Contact: Ralph L. Willard, D.O., Dean, Texas College of Osteopathic Medicine, Camp Bowie at Montgomery, Fort Worth, 76107.

**GRAND PRAIRIE** — Three approved residencies are available: They are in anesthesiology, general surgery and orthopedics. Apply immediately by contacting Mr. R. D. Nielsen, Administrator, Grand Prairie Community Hospital, 2709 Hospital Boulevard, Grand Prairie, Texas, 75050.



# Opportunities Unlimited

Practice Locations in Texas

**GPS NEEDED IMMEDIATELY** — 115-bed Hurst General Hospital, located between Fort Worth and Dallas, needs general practitioners to serve rapidly growing area. Excellent opportunity for experienced or young eager physicians wanting to build a practice. Hospital will assist with start-up and relocation expenses. Contact: John Miller, Administrator, Hurst General Hospital, 837 Brown Trail, Hurst, Texas, 76053 or Phone 817-268-3762.

**HOUSTON** — Physicians interested in the Houston area (family practice or pediatrics urgently needed). Contact: Lanny Chopin, Administrator, Eastway General Hospital, 9339 N. Loop East, Houston, Texas, 77029. Phone: 713-583-8585.

**HOUSTON** — G.P. wanted to associate with another D.O. in general practice in the Houston area. Must be willing to do some obstetrics. Please reply to: Box "M", TOMA, 512 Bailey Avenue, Fort Worth, Texas, 76107.

**LUBBOCK** — D.O.s needed in areas of general practice, anesthesiology, ob-gyn and orthopedic surgery at Community Hospital of Lubbock. Generous guarantee, free office rent and other financial assistance available. Contact: Joyce R. Wallace, Director of Physician Relations, National Accommodations, Inc., 4070 Laurel Canyon Blvd., Studio City, Calif., 91604 or call collect 213-985-8386.

**MATADOR**—\$3,000 monthly guarantee, free clinic rent, newly remodeled 13-bed Motley General Hospital is available to a qualified D.O. Clinic has 2,000 current active charts. Prosperous West Texas area embracing population of 6,000 in service area. Contact John Burnett or Sut Brazelton at 806-347-2811, 347-2780 or 347-2825.

**MC ALLEN** — Citizens of McAllen are seeking an osteopathic physician to locate in their city. Located in the Rio Grande Valley, McAllen has a population of 55,000 and is growing. It is a beautiful city with lovely homes and churches, fine people and many cultural advantages. McAllen's only D.O. retired two years ago.

**MESQUITE** — Rutherford General Hospital, 165-bed facility, has positions open for G.P.s, pediatricians, urologists, ENT and emergency physician. Mesquite is an urban community of 70,000 which is a part of the Dallas-Fort Worth metropolitan area. If interested please contact: Sherry Lackland, P. O. Box 1481, Mesquite, 75149 or call 214-285-6359.

**MOONLIGHTING** — Opportunities for extra money. Cover every 5th weekend with group of D.O.s. Competitive pay plus bonus at Hood General Hospital, Granbury. For more information contact: L. G. Padget, D.O., 115 South Houston, Granbury, 76048 or call 817-443-0630.

**OB-GYN Office** — All medical equipment, supplies, and furniture for sale. Also office equipment and furniture. Contact Attorney for estate: Charles Carruth, 1000 Capital Bank Bldg., Dallas, 75206, or call 214-821-4500.

**PEARSALL** — Good opportunity for establishing a well rounded family practice. Plenty of emergency room work available. Pearsall has about 6,000 population and is located 55 miles southwest of San Antonio on I-35. It has a 20-bed joint staff hospital and with two general practitioners. Much obstetrical work available. The hospital owns a clinic fully equipped and is rent-free for four months plus a guaranteed income of \$2000 monthly for four months. No investment and no risks. If interested please call D. L. Schmidt, D.O., 512-334-3351.

**SPEARMAN** — Opportunity for general practitioner to locate in city of between 4,000 to 5,000 population, 15 miles northeast of Amarillo. Hospital will provide office space and furnish a minimum salary guarantee. For more information contact: Jerry Taylor, Administrator, Hansford Hospital & Clinic, 707 South Roland, Spearman, Texas, 79081. Phone: 806-659-2535.

**TYLER** — Population 70,000. General family practice in beautiful East Texas. Office space adjacent to 54-bed general osteopathic hospital. Excellent schools including Tyler Junior College and Texas Eastern University. Beautiful lakes and trees. Outdoor activities unlimited. This is one of the most beautiful places in the country to live and raise a family. Financial assistance available for the right person. Contact: Mr. Olie Clem, Administrator, Dock Memorial Hospital, 1400 W. South Loop 323, Tyler, 75701. Phone: 214-561-3771.

## POSITIONS DESIRED

**AVAILABLE PART-TIME** — Doctor is available May 1, 1979 for part time temporary office work. Primarily Osteopathic Manipulation. Cranial/Academic training. Life member AOA/TOMA. Knoxville graduate 1931. Texas/Mo license. Contact Sam H. Hitch, D.O., 3303 University, Lubbock, 79410 or call 806-797-3580 or 795-6466.

**FAMILY PHYSICIAN-EMERGENCY PHYSICIAN (D.O.)** — Desires to work in central or southern Texas. Will consider all offers. Prefer Dallas, Austin or Houston areas. Write Box "T", TOMA, 512 Bailey Avenue, Fort Worth, Texas, 76107.



**GENERAL INTERNIST**—Desires to move to Texas and establish practice. Currently senior resident at St. Elizabeth Hospital Medical Center in Youngstown, Ohio. A 1975 graduate of PCOM and a diplomate of the National Board of Osteopathic Examiners. Contact: F. G. Miller, Jr., D.O., 492 Georgetown Street, Harrisburg, Pennsylvania, 16150 or call 717-746-7231 or 412-962-9077, hospital and home respectively.

**GENERAL PRACTITIONER** — D.O. desires solo or group general practice in a rural area, north Texas or northwest Texas. (no OB please). Has been in solo practice since 1972, is 37 years of age and is a U. S. Citizen. Financial and relocation assistance a must. Present licenses DNB; CA; NJ; and IND (pending). Medical or administrative positions will be considered. For more information contact: Robert R. Migliorino, D.O., P. O. Box 188, Madera, California 93639 or 209-674-7686.

**GENERAL PRACTITIONER** — D.O. currently interning at the Kansas City College of Osteopathic Medicine is interested in associating with an established physician in southern Texas. Would prefer city of 30,000 to 40,000 population. Contact: William Billington, D.O., 6124 North Broadway, Kansas City, Missouri, 64118.

**INTERNIST, CARDIOLOGIST**—D.O. desires to relocate in a Texas city of about 100,000 population. Board certified. Graduated from PCOM in 1970. Osteopathic internship at Parkview Hospital in Philadelphia, Pa. Three-year residency in internal medicine and two-year cardiology fellowship. For more information, please write Box "J", TOMA, 512 Bailey Avenue, Fort Worth, Texas, 76107.

**OB-GYN** — Board eligible D.O. looking for practice opportunities in Texas. Available July 1980. Contact: John H. Williams, D.O., Box 155, Naval Regional Medical Center, Charleston, South Carolina, 29408.

**PEDIATRICIAN** — Board eligible pediatrician with neonatal interests, currently completing military obligation, desires practice in an urban Texas location. Contact Jesse R. Ramsey, D.O., Chief, Dept. Peds., U. S. Army Hospital, Augsburg, W. Germany, APO, NY 09178.

**RADIOLOGIST (D.O.)** — Actively looking for hospital position or partnership with another radiologist. Will be available June 1979. For more information write Box "E", TOMA, 512 Bailey Avenue, Fort Worth, Texas, 76107.

**RADIOLOGIST** — Board certified radiologist is wishing to relocate in Texas. Prefers large cities. For more information contact: Bruce Rosenberg, D.O., 223 Parkclay Circle, Sheltenham, Pennsylvania, 19012.

For information call or write Mr. Tex Roberts, Executive Director, TOMA Locations Committee  
512 Bailey Avenue, Fort Worth, Texas, 76107. Phone 817-336-0549

# hgh Hurst General Hospital

## HEALTH CARE WITH A PERSONAL TOUCH

- Quality "Patient Centered Nursing Care"

- Full service 115-bed hospital in process of major expansion

- Located between Dallas-Fort Worth

- Rapidly growing community

- Hospital will assist you in establishing "your" practice

### CONTACT:

Mr. John Miller, Administrator, Hurst General Hospital, 837 Brown Trail, Hurst, Texas, 76053: 817-268-3762



TEXAS OSTEOPATHIC MEDICAL ASSOCIATION

512 Bailey Avenue  
Fort Worth, Texas 76107

Address Correction Requested

BULK RATE  
U. S. POSTAGE  
PAID  
FORT WORTH, TEXAS  
Permit No. 1848

# INSURE IN YOUR OWN COMPANY

For your professional liability insurance  
join with other members of the  
Osteopathic Medical Profession



## PROFESSIONAL MUTUAL INSURANCE COMPANY

2 East Gregory

Kansas City, Missouri 64113

816-523-1835

Financed and Operated by  
OSTEOPATHIC PHYSICIANS

COMPETITIVE PREMIUMS

SERVICE ORIENTED

SERVING THE OSTEOPATHIC PROFESSION EXCLUSIVELY SINCE 1959